

The Windermere

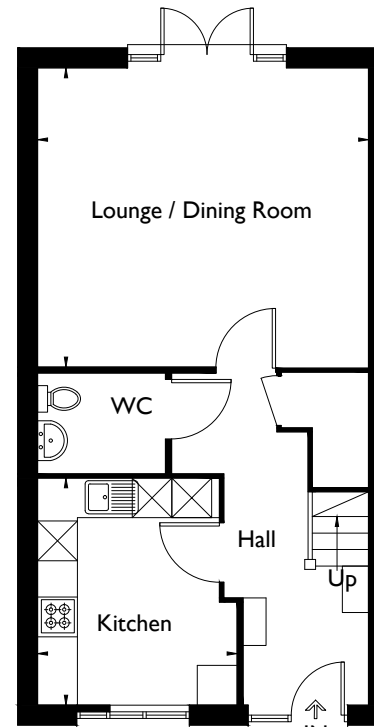
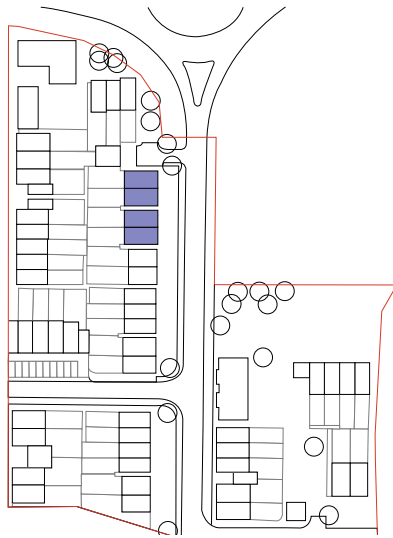
Plot 38, 39*, 40 & 41*



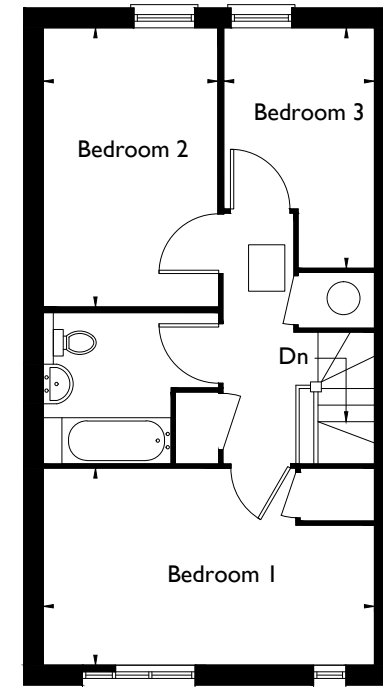
New Quarter
Bordon

3 bedroom semi-detached house

Lounge/Dining Room	5.00m x 4.52m	16'5 x 14'10
Kitchen	3.43m x 3.01m	11'3 x 9'11
Bedroom 1	5.00m x 2.98m	16'5 x 9'9
Bedroom 2	4.21m x 2.63m	13'10 x 8'8
Bedroom 3	3.63m x 2.27m	11'11 x 7'5
Approximate Gross Internal Area	96.2 sq m / 1035 sq ft	



Ground



First

*Handed



NOTE: All plans are for illustrative purposes only and are not to scale. Consumer protection from unfair trading regulations NOTE: Purchasers are warned that all plans and illustrations are for guidance only. Alterations and variations can and do occur during the process of the works but all purchasers will be shown floor plans before reservation, and measure-up appointments will be made when suitable.

